

# DHANUSHA MARINE

*Beyond the Horizon*



Dhanusha Group

Since 1989



Dhanusha Marine Lanka Exports (Pvt) Ltd is a subsidiary launched under the umbrella of Dhanusha Group, having its origins in 1989. The state-of-the-art boat building facilities are located at Kalutara, Beruwala and Moratuwa which are only a few miles to the south of the capital city of Colombo, Sri Lanka. The Company is primarily engaged in manufacturing fiberglass leisure and fishing boats.

Dhanusha Marine has exported to more than 10 countries in the European, Asian and African regions such as Norway, Sweden, Germany, Tanzania, Maldives, China, Djibouti, Seychelles, Netherlands, India, South Korea, Australia and Myanmar. With presence in these countries and more potential partnerships along the way, Dhanusha Marine has already established themselves as a promising boat builder and leader in the South Asian Boating Industry.

## Vision

Improve the demand for the DMLE products in the world through the quality, productivity and after sales services.

## Mission

Capturing and dominating the international fiberglass industry by using ultra modern technology as well as government facilities.



	Page		Page
Expertise	/04	Fishing Boats	/13- 14
Standards	/05	Hanil .....	13
Quality	/05	Taprobane Series .....	14
Design	/06	Passenger Boats	/15
Manufacturing	/07	Catamaran Series	/16
Leisure Boats	/08 - 12	Cat 760 .....	16
Ciljan 400 .....	08	Cat 1100 .....	16
Ciljan 470 .....	08	Cat 1370 .....	16
Kayak 360 .....	09	Cat 2200 .....	16
Kayak 370 .....	09	Other Products	/17
Pram 300 .....	09	Snow Pulk .....	17
Power 500 .....	10	Snow Sledge .....	17
Power 590 .....	10	Horse Trailer .....	17
Weekender 690 .....	11	Trailer Cover .....	17
West 590 Pro .....	12	Tanks .....	17
		Achievements	/18

# Expertise



## Design, Manufacture and Deliver

Dhanusha Marine will design your boats with Safety and Distinctive Styling, manufacture with best grade materials and meticulous craftsmanship and deliver to you on-time economically as well as safely.



## Skilled Craftsmanship

With 30 years on hands experience in the industry as well as training from Netherlands, Norway and Japan, our fiberglass craftsmen are considered the best pattern makers, mould makers, laminators and finishers.



## Exporting Globally

Our boats are exported globally. Spanning across 4 continents, we have a strong, satisfied clientele who undoubtedly seek us for new builds. With boat manufacturing as the company's forte, Dhanusha Marine has continued to secure national & international markets for 30 years.



## State-of-the-Art Facility

All our boats are built at our state-of-the-art manufacturing facilities with an area of more than 10,000 m<sup>2</sup>. All factories are equipped with cutting-edge technology related to composite construction.



## Premier After-Sales Service

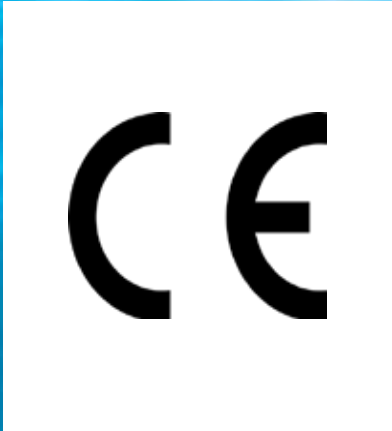
With an abundance of friendly smiles that never fail to greet you, we have the most premier after-sales service in the industry. We have an ideal Warranty Policy as well as 24/7 on-call support.



## Customized Builds

With many options to choose from, the possibilities are endless. However, we have the capability to build Customized Products adapted to specific requirements brought in by clients.

# Standards



All our products conform to global standards. CE Mark has been obtained for all products exported to Europe. We are capable of working with other Classification Bodies as well where necessary Standards are required. We are also registered under the Board of Investments, Sri Lanka.

Our Research & Development Unit continuously strives to make our products better staying ahead of other evolutionary changes in the boating world.



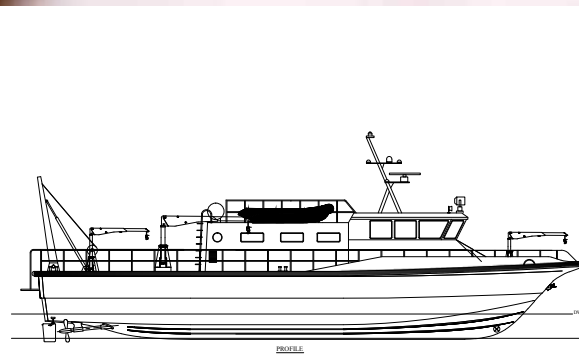
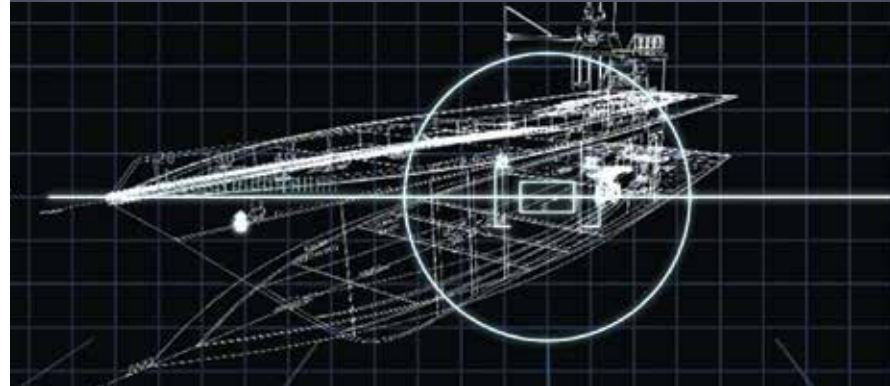
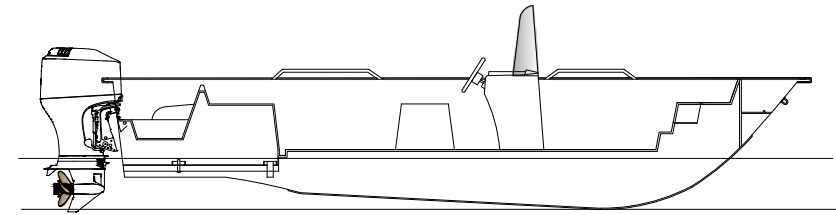
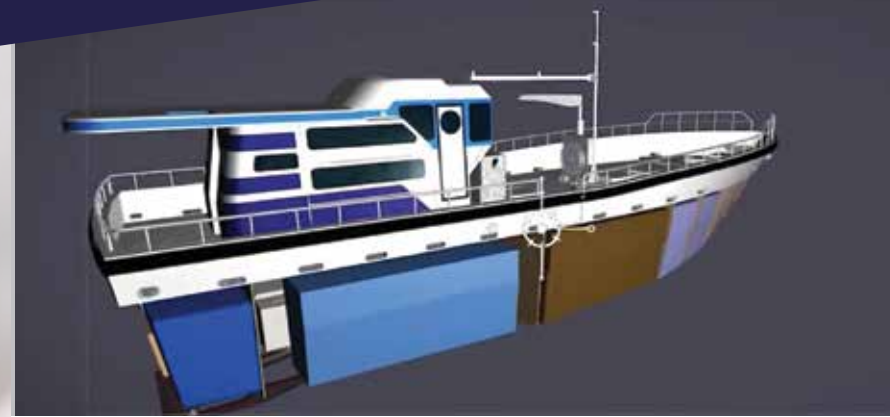
# Quality

We believe customer satisfaction to be our key Quality Policy. We are committed to ISO 9001 Quality management system sharing the responsibility of implementing innovative ideas to control the Quality of our Products for the benefit of our customers.

Ongoing production undergo strict testing protocols for quality from procuring finest raw materials until delivery to our customer's door in the safest manner. This has helped us to maintain the highest quality in our products exported worldwide.

# Design

At Dhanusha Marine Lanka Exports, your boats are impeccably designed by our highly experienced design engineers. We are also capable of building customized products adapted to specific requirements brought in by clients. Your special customized order will be built utilizing the latest technology and skilled craftsmanship.



# Manufacturing



Geared with high-end technology including Gelcoat Spray-up and Vacuum Infusion, the production staff of Dhanusha Marine Lanka Exports has undergone comprehensive training on technical methodologies, new advances and changes in fiberglass production in order to make the products qualitatively superior, under expertise consultation from the Netherlands, Norway, Japan and South Korea.



# Leisure Boats

## Ciljan 400

Length	4.05m
Beam	1.43m
Draft	0.51m
Total Passengers	03
CE Category	D



## Ciljan 470

Length	4.79m
Beam	1.43m
Draft	0.5m
Total Passengers	03
CE Category	D



Ciljan Boats are rowing boats that are practically unsinkable with entire bottoms filled with PU Foam. The boat is easy to handle, and three removable boxes are available for storage. Ciljan boats can also be driven using an outboard motor.





## Kayak 360



Length	3.6m
Total Passengers	01
Beam	0.72m

## Kayak 370



Length	3.7m
Total Passengers	03
Beam	0.9m

## Leisure Boats

### Pram 300

Pram Boats by Dhanusha Marine are handy and light. Boat includes one lockable box as well for storage. The boat is easy to drive and safe.

Length	3.77m
Beam	1.40m
Draft	0.51m
Total Passengers	03



# Leisure Boats

## Power 500



Power Series has been produced by Dhanusha Marine for over 10 years with a line of ongoing production. Not only is it the most affordable range of boats, it also has adequate storage and awesome performance.

### Power 500

Lenght	5.06 m
Beam	1.93 m
Height	0.70 m
Weight	475 kg
Total Passengers	08

## Power 590



### Power 590

Lenght	5.90 m
Beam	2.30 m
Draft	0.20 m
Weight	550 kg
Total Passengers	08



# Weekender 690

# Leisure Boats



Dhanusha Weekender 690 defines itself as an extremely spacious all round, model - just perfect for a relaxing weekend getaway on the water. Even with economical mid-range outboards fast acceleration and excellent performance. The thoughtfully designed cabin with 1.35 m ceiling height accommodates three berths.

Length	7.00m
Beam	2.50m
Height	1.80m
Total Passengers	06-08



# Leisure Boats

## West 590 Pro



West 590 Pro is the latest addition to the Dhanusha family. In collaboration with Norwegian expertise, we have produced the perfect boat for leisure fishing. The storage box in the middle can be placed both on port and starboard side. The boat can also be delivered without a console.

Length	5.90 m
Breadth	2.20 m
Draft	0.20 m
Weight	500 kg
Total Passengers	08
CE Category	C



# Hanil

# Commercial Fishing Boats

Hanil Fishing Series were an addition to Dhanusha Boats with the expertise of Boat Building Technology from South Korea. These boats are suitable for fishing in the seas. Boats are extremely stable even in very high speeds for fishing to be conducted economically. Plenty of space is available to store the harvest as well as equipment.



Hanil 770	
Length	7.00m
Beam	2.00m
Height	0.80m

Hanil 830	
Length	8.29m
Beam	2.08m
Height	0.86m



Hanil 960	
Length	9.6m
Beam	2.5m
Height	0.9m

Hanil 980	
Length	9.8m
Beam	2.5m
Height	0.8m



# Commercial Fishing Boats

## Taprobane Series



Another recent innovation from Dhanusha Marine Lanka is the 24m Multi-purpose Vessel. Designed by a team of expert naval architects according to naval design codes suitable for conditions around the world, the vessel is capable of being built at lengths 17m, 18m, 20m, 22m and 24 m.

The general arrangement of the heavy displacement vessel is as a hard chine 'V, Bottom displacement hull, fine forward entry and flat run aft suitable for operation on all kinds of sea conditions.

For the fishing series, the hull is strengthened by Polyurethane foam frames.

Inboard Marine Engine, Generator, Hydraulic & Steering Gear, Cooling System Communication Equipment, Refrigerator, Lights, Fire Extinguishers, Electrical System, Accommodation, Deck Fittings, Bilge System, Insulated Fish Hold, Fuel Tanks, Hydraulic Line Hauler etc. can be supplied



# Passenger Boats

on request. All tanks and spaces can be customized on customer request.

Exterior hull and deck are done to a perfect finish on moulding and all interior visible is levelled to a smooth finish. Trials will be carried out in suitable sea conditions before handing over of each vessel.

Our Team of experts will help you select and customize the boat as per the running conditions.



Taprobane 1700	
Length	17.00 m
Max. Beam	5.59 m
Depth	2.98 m
Draft	1.75 m
Engine range	350-550 hp

Taprobane 1800	
Length	18.00 m
Max. Beam	5.59 m
Depth	2.98 m
Draft	1.75 m
Engine range	400-600 hp

Taprobane 2000	
Length	20.00 m
Max. Beam	5.59 m
Depth	2.98 m
Draft	1.80 m
Engine range	450-750 hp

Taprobane 2200	
Length	22.00 m
Max. Beam	5.59 m
Depth	2.98 m
Draft	1.80 m
Engine range	500-1000 hp

Taprobane 2400	
Length	24.00 m
Max. Beam	5.59 m
Depth	2.98 m
Draft	1.80 m
Engine range	500-1100 hp

# Catamaran Series

Catamaran fleet is a new addition to our boat range. Dhanusha Marine may bring about a life style of entertainment worldwide with the house boats and floating restaurants.

We are also in the process of developing a Solar Catamaran in the near future keeping up with novel trends of going green.

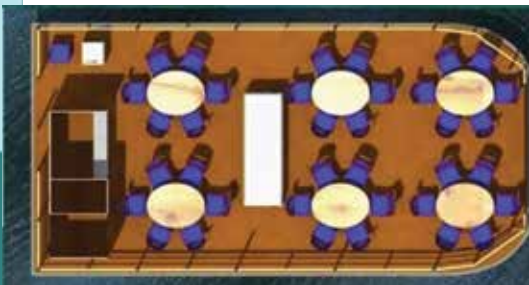
## Cat 1100



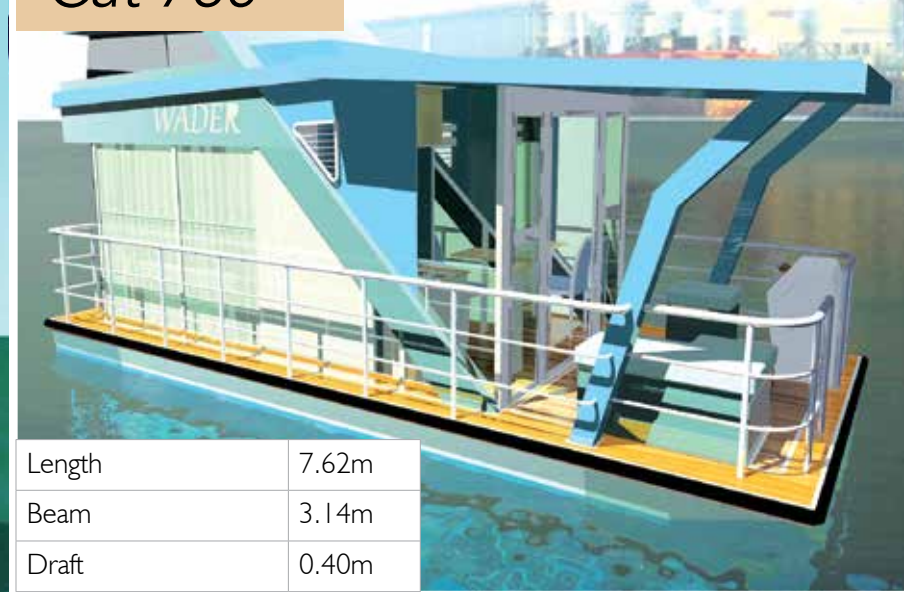
Length	11.58m
Beam	5.48m
Draft	0.5m

## Cat 1370

Length	13.71m
Beam	5.48m
Draft	0.5m



## Cat 760



Length	7.62m
Beam	3.14m
Draft	0.40m

## Cat 2200

Length	22.83m
Beam	7.90m
Draft	0.75m





# Other Products

*Snow Pulk*



*Horse Trailer*



Dhanusha Marine produces not only boats, but horse trailers, trailer covers, tanks as well as snow sledges made from Fiberglass Materials. These production lines are also governed by the same quality management system.

*Snow Sledge*



*Trailer Cover*



*Tanks*



# Achievements



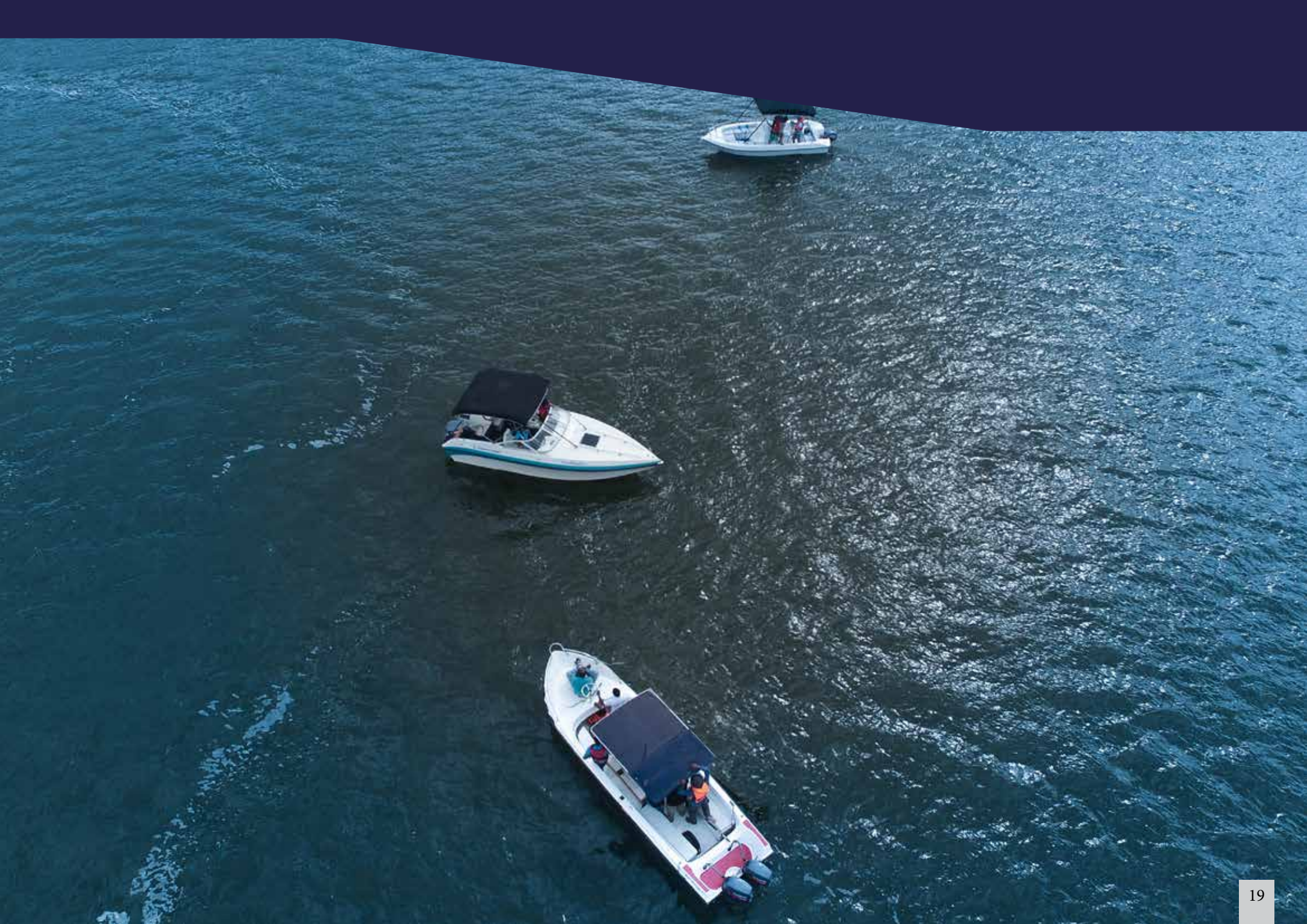
Dhanusha Marine has been recognized by many organizations and institutes to be a valuable corporate citizen for our innovation, customer satisfaction and contribution to the community.

We have been awarded;

Best Exporter – Boat Building Sector by the Export Development Board, Sri Lanka.

Best Exporter Gold and Silver Awards by the National Chamber of Exporters, Sri Lanka.

We are also committed to a cordial relationship between community and environment. Our Sustainability policy focuses on Energy, Waste and community to promote a scheme of initiatives that focus on the environment, economy and people both within and beyond our organisation.





## **Dhanusha Marine Lanka Exports PVT Ltd**

---

362, Galle Road,  
Gorakana, Panadura,  
Sri Lanka.

Tel. : +94 114 211 494

Email : [info@dmlexports.com](mailto:info@dmlexports.com) / [gsernando@sltnet.lk](mailto:gsernando@sltnet.lk) / [gayathridml@sltnet.lk](mailto:gayathridml@sltnet.lk) / [sachithradml@sltnet.lk](mailto:sachithradml@sltnet.lk)

Facebook : Dhanusha Marine  
instagram: dhanushamarine

[www.dmlexports.com](http://www.dmlexports.com), [www.dhanushamarinelanka.com](http://www.dhanushamarinelanka.com)